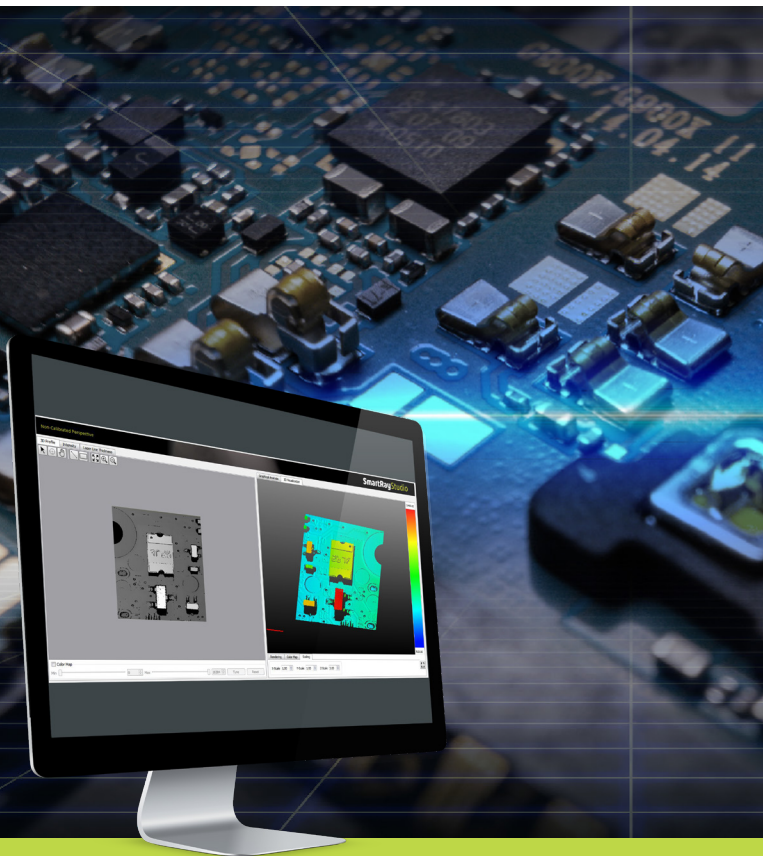


CUTTING EDGE 3D SENSORS FOR INSPECTION, GUIDANCE AND MEASUREMENT

ECCO 95+

3D INSPECTION SENSOR



ECONOMIC & COMPACT HIGH SPEED 3D SCANNING, ULTRA
HIGH RESOLUTION

SUPERIOR 3D IMAGE QUALITY
BEST REPEATABILITY UNDER CHALLENGING CONDITIONS

REDUCED POWER CONSUMPTION
LOWER OPERATING TEMPERATURE FOR BETTER METROLOGY PERFORMANCE

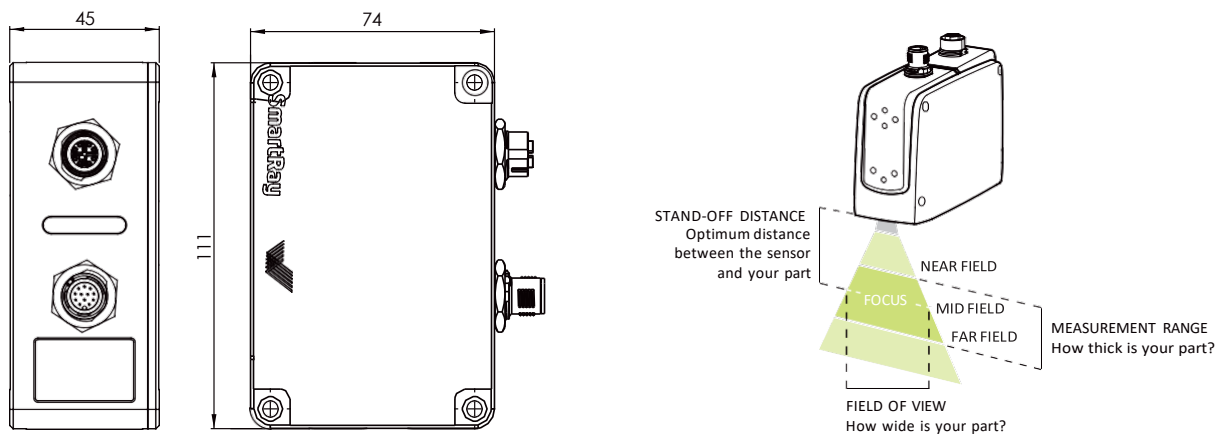
INDUSTRIAL COMPACT HOUSING
BETTER STABILITY AND FLEXIBILITY FOR MACHINE AND ROBOT INTEGRATION

KEY SPECIFICATIONS

Model	ECCO 95.040+
Field of view (near mid far)	34 36 38 mm
Typical measurement range	16 mm
Stand-off distance	55 mm
Typical vertical resolution	1.4-1.8 μm
Typical lateral resolution	18-20 μm
Z-linearity	0.006%
Z-repeatability	0.4 μm
Mounting distance	79 mm
Laser wavelength	450 nm (brilliant blue laser)
Part number laser class 2 laser class 3R	3.001.203 3.004.203
Laser class (standard optional)	2 3R
Maximum points / 3D profile	1920
Weight	<550 g
Typical scan rate ¹	Approx. from 1 kHz up to 10 kHz
Typical 3D point rate ¹	Approx. from 0.7 up to 15 million points/sec
Interface	Gigabit Ethernet (1 Gbit/sec)
Inputs	2x Inputs (5 – 24 VDC) Quadrature Encoder (AB-Channel, RS-422 standard)
Outputs	2 x Outputs, 24 VDC (max. 20 mA)
Trigger	The following triggers are supported: START Trigger support on Input 1 – 2 DATA Trigger support on Quadrature Encoder Input (Max. DATA trigger rate: 1 MHz) DATA Trigger support on Input 2 (Max. DATA trigger rate: 10 kHz)
Input voltage power	24 VDC, $\pm 15\%$ 7.5 W
Maximum ambient light	10,000 lx
EMC test	as per EN 61 000-6-2, EN 61 000-6-4, EN 61326-1:2013-07
Electrical safety	as per EN 61 010-1-3
Protection class	III, as per EN 61 040-3
Laser safety inputs	24 VDC 0V
Enclosure rating	IP65
Air humidity	Maximum 90%, non-condensing
Temperature operation storage	0 - 40°C -20 - 70°C
Cables (Included)	Power-I/O-Encoder cable 5m: 6.320.0XX Ethernet cable 5m: 6.303.0XX

Note: Typical values may vary up to $\pm 5\%$ due to optical and production tolerances

¹ Scan rate & point rate are dependent on the configured field of view, measurement range and exposure time. A „scan“ by definition considers maximum points/3D profile i.e. full FOV. Me typical scan/point rate range has been estimated considering an exposure time of 1 μsec , min-max MR and full FOV. Me typical scan rate can be further boosted by windowing the FOV



FOR MORE INFORMATION PLEASE CONTACT US:

SMARTCOBOT No. 68, Lane 108, Cau Buou Street, Group 15, Kien Hung Ward,

100000 Hanoi (VN)

Smartcobot.com.vn | Email: Sales@smartcobot.com.vn | Tel: +84 (0) 93.789.2111